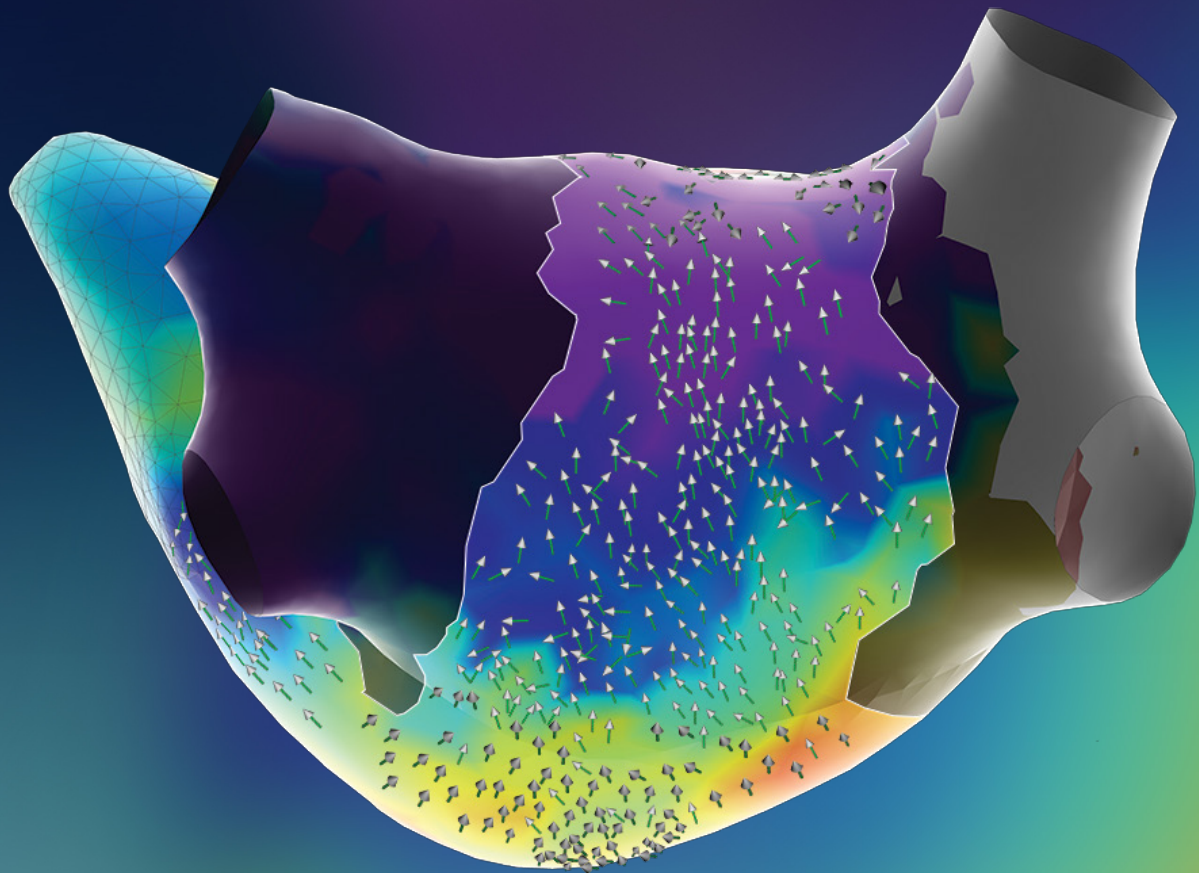


**Abbott**

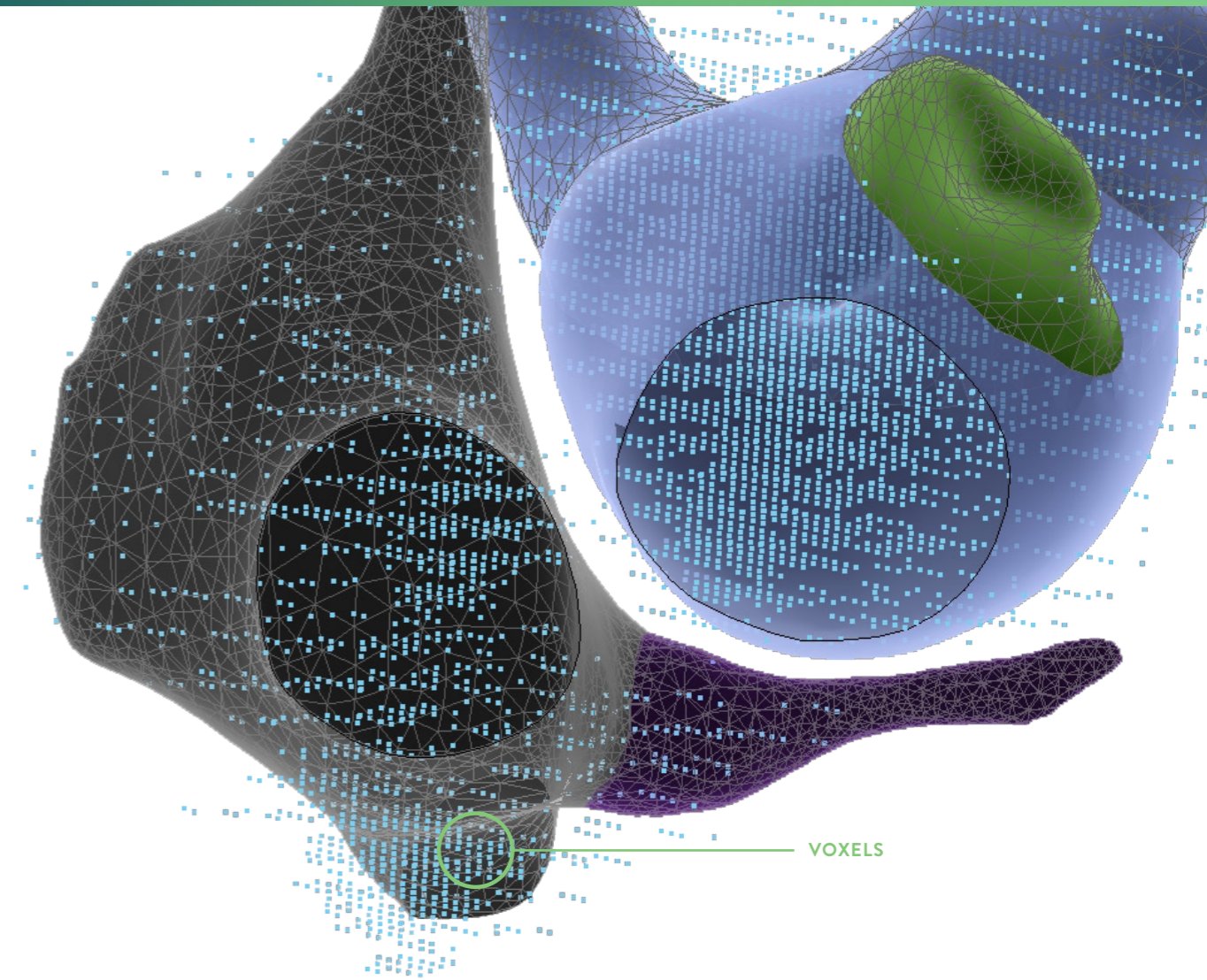
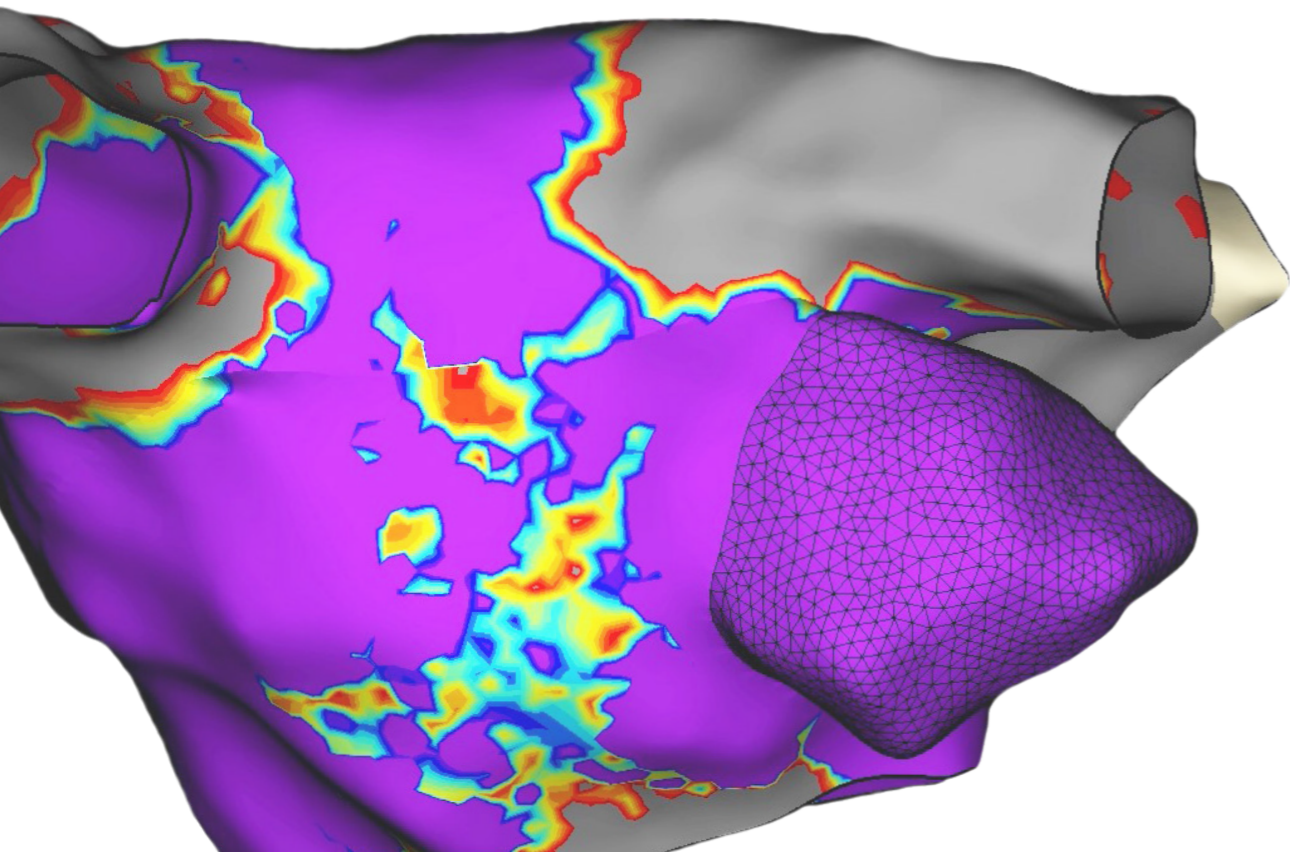
# MAPPING WITHOUT COMPROMISE

ENSITE™ X EP SYSTEM WITH  
ENSITE™ OMNIPOLAR TECHNOLOGY (OT)



**POWERFUL.  
RELIABLE.  
EFFICIENT.**

Revolutionize high-density cardiac mapping with the EnSite™ X EP System and EnSite™ Omnipolar Technology (OT) – a next generation 3D mapping platform created to give you a **POWERFUL, RELIABLE** and **EFFICIENT** user experience for every procedure.



## MAP ANY ARRHYTHMIA WITHOUT COMPROMISE

Unleash the **POWER** of the Advisor™ HD Grid Mapping Catheter, Sensor Enabled™ and EnSite OT, and EnSite™ OT Near Field to revolutionize high density mapping

Experience **RELIABLE** stability in all procedures with EnSite™ VoXel Mode – allowing users to collect data using magnetic-based coordinates to provide accurate and linear visualization

Ease system setup and improve operator **EFFICIENCY**<sup>1</sup> with a completely redesigned platform

# POWERFUL

## TRUE ELECTROGRAMS\* WITH ENSITE™ OMNIPOLAR TECHNOLOGY (OT)

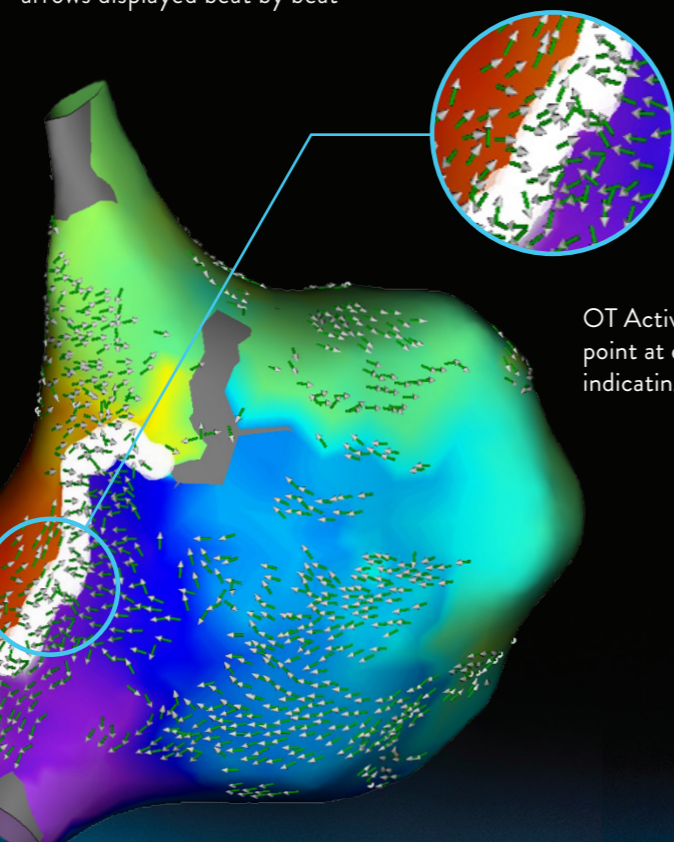
Accelerate diagnosis & treatment decisions through accurate mapping with EnSite OT and the Advisor™ HD Grid Mapping Catheter, Sensor Enabled™<sup>2</sup>

### IDENTIFY TRUE, LOCAL

annotation-independent tissue characteristics<sup>2</sup>

### GAIN INSTANT NEW PERSPECTIVE OF WAVEFRONT DIRECTION

with activation direction arrows displayed beat by beat



### SEE EVERY SIGNAL IN 360 DEGREES –

capturing signals that no other mapping technology can see\*\*

### ENHANCE MAP ACCURACY

with 3x increase in point density per acquisition\*\*\*<sup>2</sup>

OT Activation Vectors point at each other indicating line of block

\*OT captures true signals independent of catheter orientation relative to the wavefront.  
 \*\*Every signal can be defined as any signal seen on the RAI window recorded by the HD Grid mapping catheter when the map polarity is set to omnipolar.  
 \*\*\*As compared to the use of traditional bipole mapping.

# TRUST YOUR MAP: ABLATE WHERE IT MATTERS

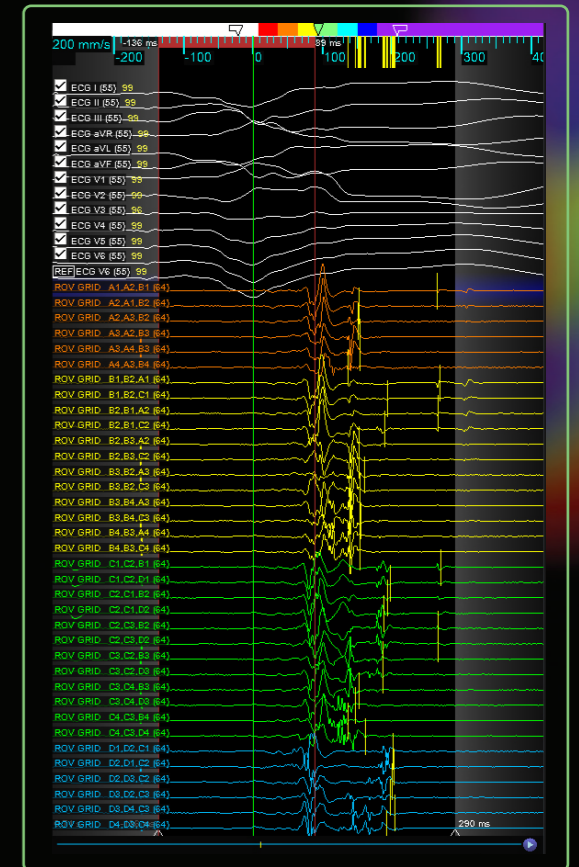
## FIRST AND ONLY SYSTEM TO ANNOTATE EARLY AND LATE OMNIPOLAR SIGNALS

EnSite™ X Software Version 3 introduces features that combine the revolution of omnipolar technology with first and last deflection algorithms

### TRUE LOCALIZE SIGNALS, MORE CONFIDENT INSIGHTS

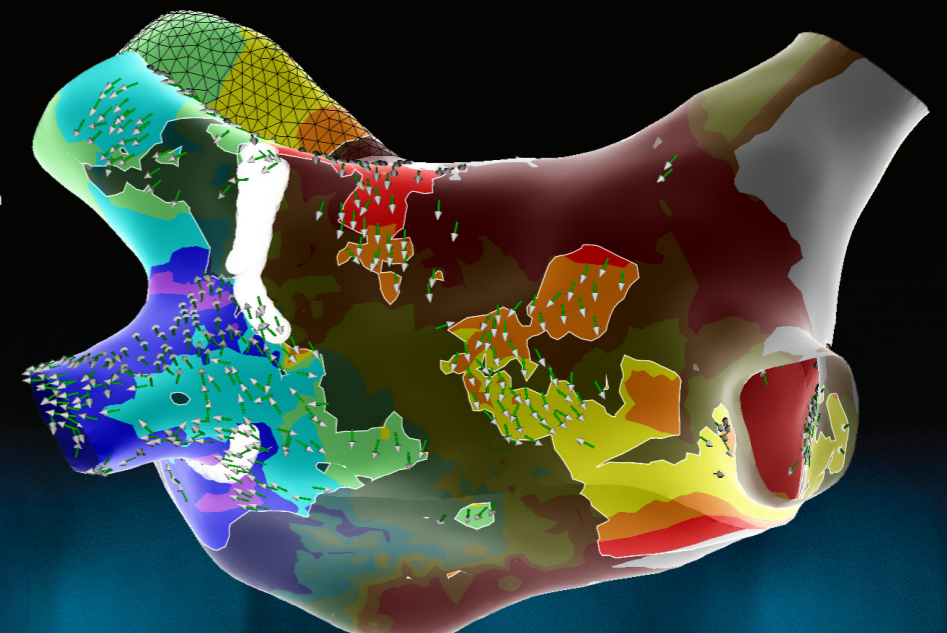
Deliver **more confident insights** by revealing localized electrical specificity automatically with **EnSite OT Near Field**. Further building on the EnSite™ Omnipolar Technology revolution, EnSite OT Near Field is a new mapping technology that automates point annotation by isolating **true localized signals**.

- **SIMPLE, OBJECTIVE AND AUTOMATED** assessment of near field signals
- **GAIN UNIQUE INSIGHTS ON A SUBSTRATE AND TISSUE CONTACT** with new peak frequency data points
- **STREAMLINE MAP INTERPRETATION** by emphasizing key information in related data sets



Early and late omnipole signals correctly and automatically annotated using first and last deflection algorithms

Validate pulmonary vein isolation (PVI) with Peak Frequency and Emphasis Maps, differentiating between PV gaps and far field components instantly



# RELIABLE

## TRUST MODEL AND LOCATION ACCURACY OVER TIME

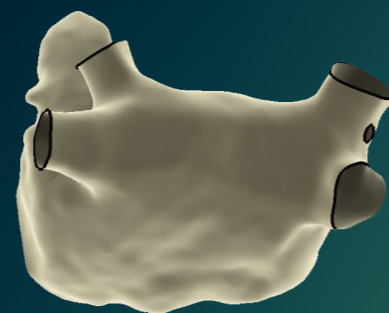
### OVERCOME STABILITY CHALLENGES

with changes in patient management and EP lab environment variables, using the **EnSite VoXel Mode**

- **IMPROVE STABILITY AND CAPTURE DATA FASTER<sup>1</sup>** with the new RespCompX algorithm by collecting points throughout the entire respiratory cycle
- **MINIMIZE CASE DISRUPTION** due to patient movement, even after cardioversion
- **ACCURATELY COLLECT DATA** throughout the procedure by reducing the impact of environmental changes caused by metal distortion



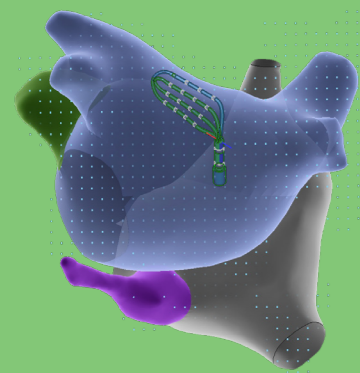
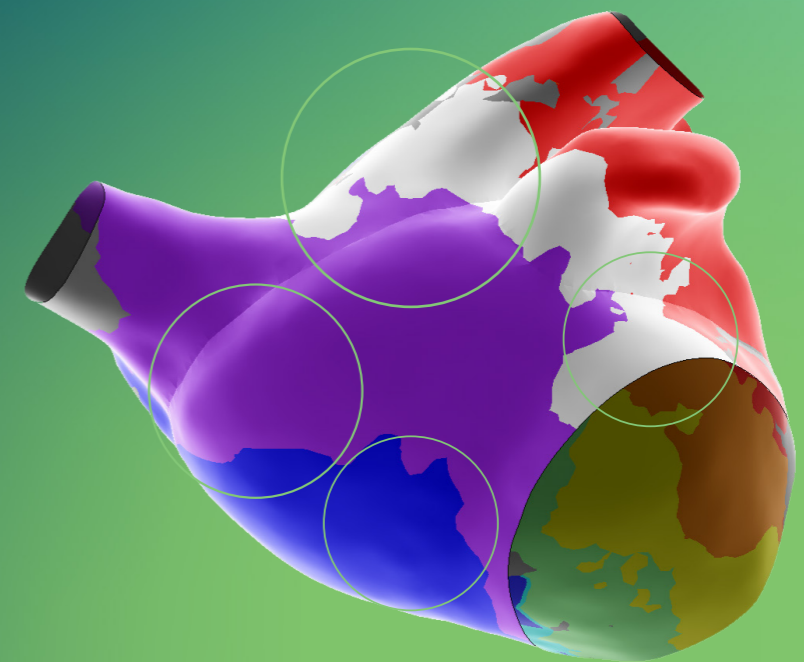
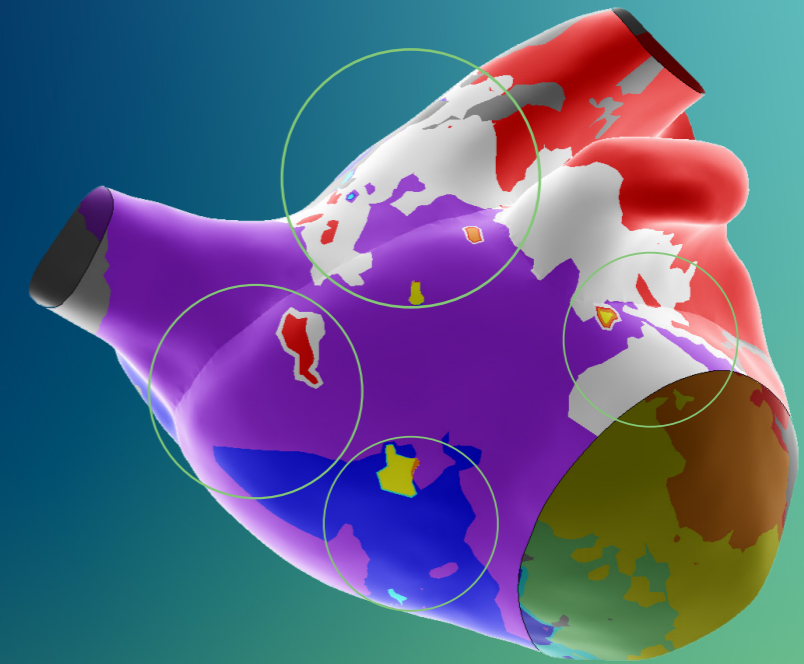
CT Image



Model Accuracy with EnSite VoXel Mode

## CLEANER MAPS WITH AUTOMATIC REMOVAL OF OUTLIERS

Your map is ready faster with outlier filtering that reduces editing time



## INTRODUCING ENSITE™ VOXEL MODE

### WHAT IS A VOXEL?

In computer graphics, a voxel is a three-dimensional (3D) point in space.

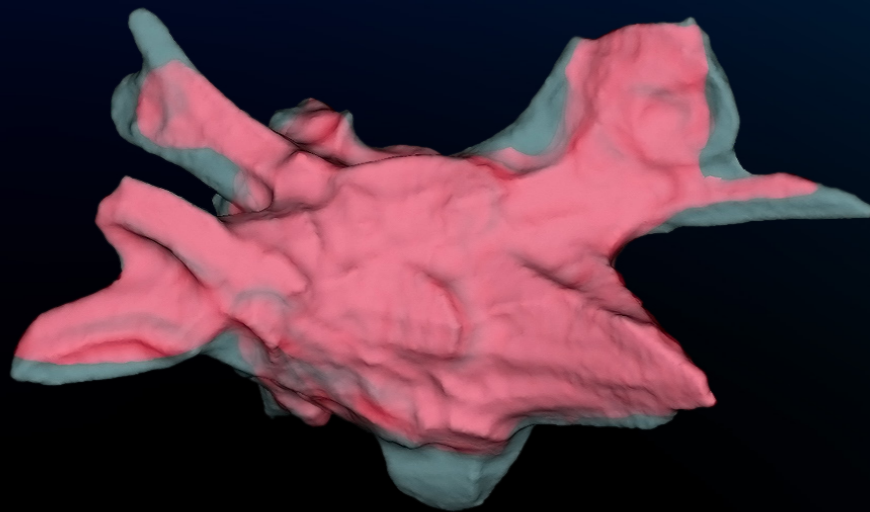
### WHAT IS ENSITE VOXEL MODE?

EnSite VoXel Mode allows user to collect modeling data using magnetic-based coordinates to provide accurate and linear visualization.

# EFFICIENT

## DRIVE EFFICIENCY WITH SINGLE-CLICK MODEL REFINEMENT

EnSite™ X Software Version 3 adds the ability to apply only points collected at end-expiration with a single click



Grey area filtered out with single click model refinement, reducing bloat

## A SYSTEM BUILT TO LAST

Next generation platform with annual software release cadence

Enhanced cybersecurity capabilities including access restrictions, white listing and strengthened patient data protection

## EASE SYSTEM SETUP WITH SIMPLIFIED CONNECTOLOGY AND A COMPLETELY REDESIGNED PLATFORM

# 50%

REDUCE THE NUMBER OF CONNECTIONS BY UP TO 50%<sup>†</sup> to facilitate a faster, easier system setup

# 94%

94% of operators saw **IMPROVED SYSTEM USABILITY** with an optimized software user interface<sup>4</sup>

# 93%

93% of users agreed the new system setup allows for **FASTER TROUBLESHOOTING** and **MINIMIZED DOWNTIME**<sup>4</sup>

## CONTINUAL, CONVENIENT PRODUCT COVERAGE<sup>††</sup>

Entitlement	1-, 2- or 3-year Terms Basic Assurance™	1-, 2- or 3-year Terms Assurance™ Plus	1-, 2- or 3-year Terms Assurance™ Premium	3-year Term Only Endurance™ Plus
Technology Performance Package				✓
Standard Software Upgrades (e.g., v.1.0 to v.2.0)		✓	✓	✓
Preventive Maintenance (one visit/year)		✓	✓	✓
On-site Service and Repair (if necessary)	72-hour Response	48-hour Response	24-hour Response	24-hour Response
Telephone Technical Support	✓	✓	✓	✓
Expansion Modules <sup>†††</sup>			✓	✓
Hardware Upgrades and Revisions <sup>†††</sup>			Discounted	
Next Generation Hardware Iterations <sup>†††</sup>			Discounted	

<sup>†</sup> Reduction of connections from the patient connecting to the amplifier from 55 (EnSite Precision™ Cardiac Mapping System) to 25 (EnSite™ X EP System) for an AF case.  
<sup>††</sup> Chart does not show all service entitlements. Subject to country availability. Please consult with your local Abbott representative for specific plan terms and conditions.  
<sup>†††</sup> Released during the term of service coverage.



# BOLD SOLUTIONS TO CHALLENGE AFIB

ACCESS      IMAGING      TRANSSEPTAL      MAPPING      ABLATION      LAAO      VASCULAR CLOSURE      MONITORING



Agilis™ NxT  
Steerable Introducer



ViewMate™  
Ultrasound Console



BRK™ Transseptal  
Needles



Advisor™ HD Grid Mapping  
Catheter, Sensor Enabled™



FlexAbility™ Irrigated Ablation  
Catheter, Sensor Enabled™



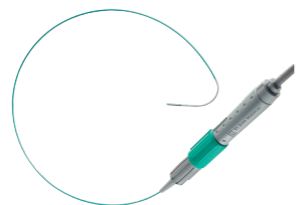
Amplatzer™ Amulet™  
LAA Occluder



Perclose™ ProStyle™  
Suture-Mediated Closure  
and Repair System



Jot Dx™ Insertable  
Cardiac Monitor



ViewFlex™ Xtra ICE Catheter



EnSite™ X EP System



TactiFlex™ Ablation Catheter,  
Sensor Enabled™

ABBOTT - A BOLD PARTNER IN THE FIGHT AGAINST AFIB

1. Abbott. Data on File. Document #90471779; Abbott. Data on File. Document #90529279; Abbott. Data on File. Document #90529261.
2. Deno, D. C., Bhaskaran, A., Morgan, D. J., Goksu, F., Batman, K., Olson, G. K., . . . Nanthakumar, K. (2020). High-resolution, live, directional mapping. *Heart Rhythm*, 17(9), 1621-1628. doi:10.1016/j.hrthm.2020.04.039
3. Abbott. Data on File. Document #90569806.
4. Abbott. Data on File. Document #90471779.

**Rx Only. Brief Summary:** Prior to using these devices, please review the Instructions for Use for a complete listing of indications, contraindications, warnings, precautions, potential adverse events, and directions for use.

**Abbott**

One St. Jude Medical Dr., St. Paul, MN 55117 USA, Tel: 1 651 756 2000  
Abbott.com

<sup>™</sup> Indicates a trademark of the Abbott group of companies.  
‡ Indicates a third party trademark, which is property of its respective owner.  
© 2023 Abbott. All Rights Reserved.  
MAT-2301209 v2.0 | Item approved for use outside of the United States only.

